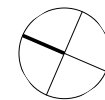
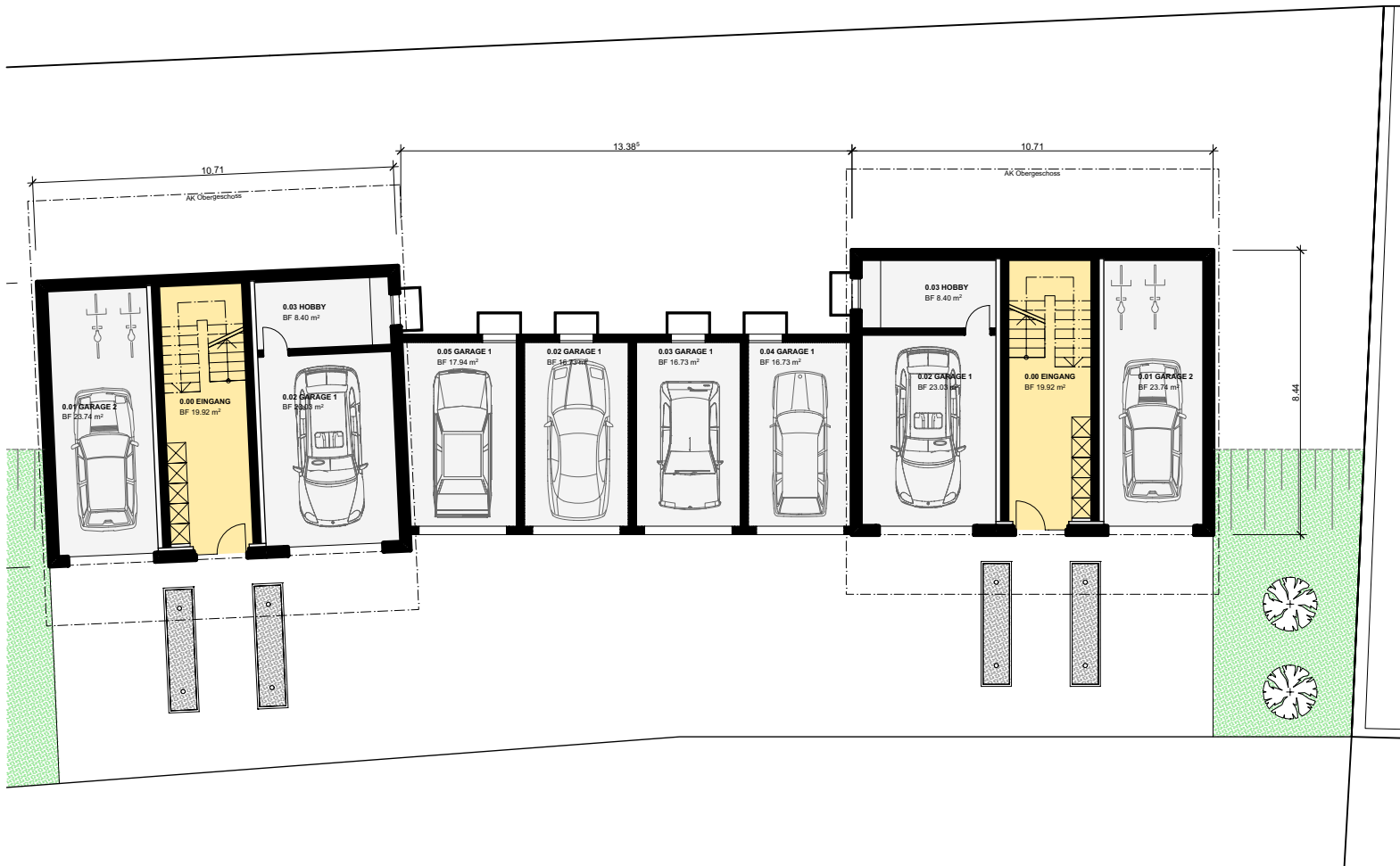




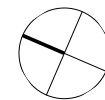
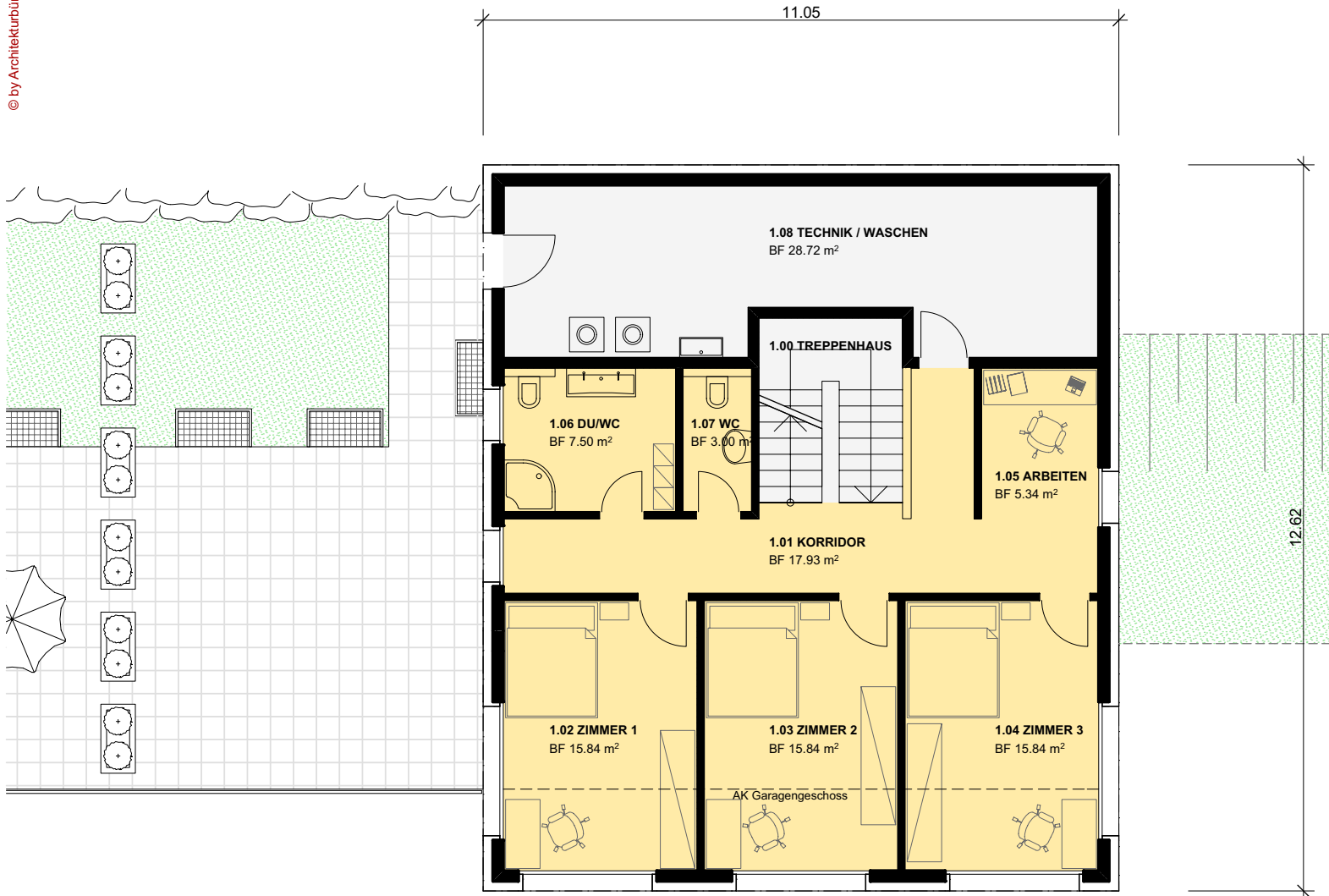
# Studie Neubau EFH | Blumenweg | 6234 Triengen



# Garagengeschoß

# Studie Neubau EFH | Blumenweg | 6234 Triengen

© by Architekturbüro W. Imfeld 2008



# Erdgeschoss

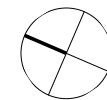
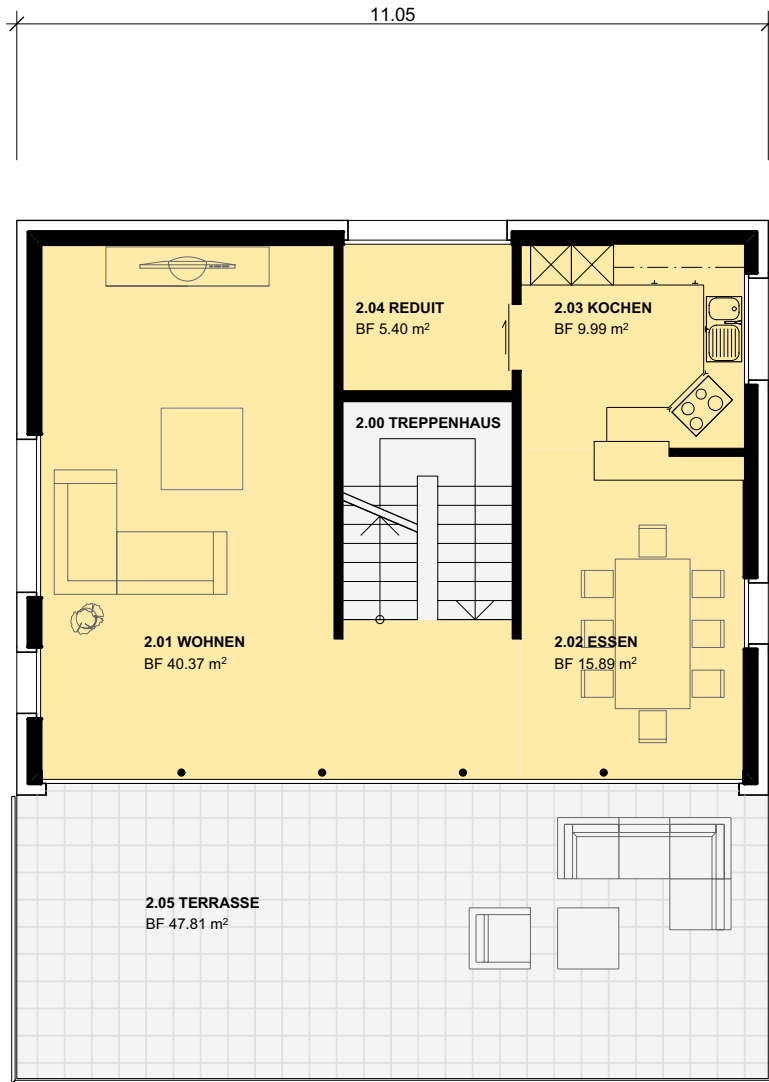


Architekturbüro W. Imfeld  
Büro für Architektur und Schätzungen

Gerliswilstrasse 43  
6020 Emmenbrücke  
www.imfeldhaus.ch

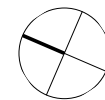
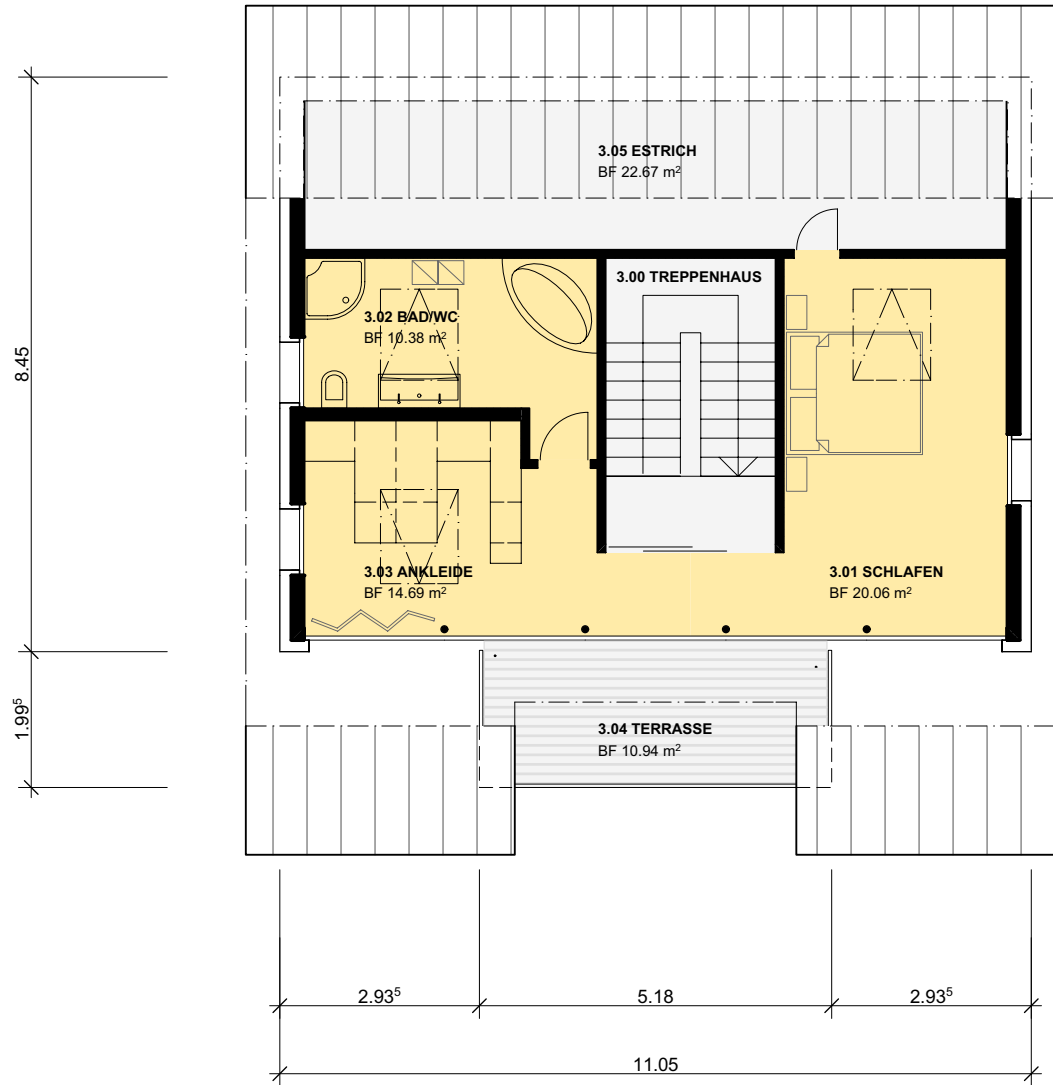
Tel. 041 260 23 25  
Fax: 041 260 23 10  
info@imfeldhaus.ch

# Studie Neubau EFH | Blumenweg | 6234 Triengen



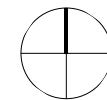
# Obergeschoss

# Studie Neubau EFH | Blumenweg | 6234 Triengen



# Dachgeschoss

# Studie Neubau EFH | Blumenweg | 6234 Triengen



# Situation